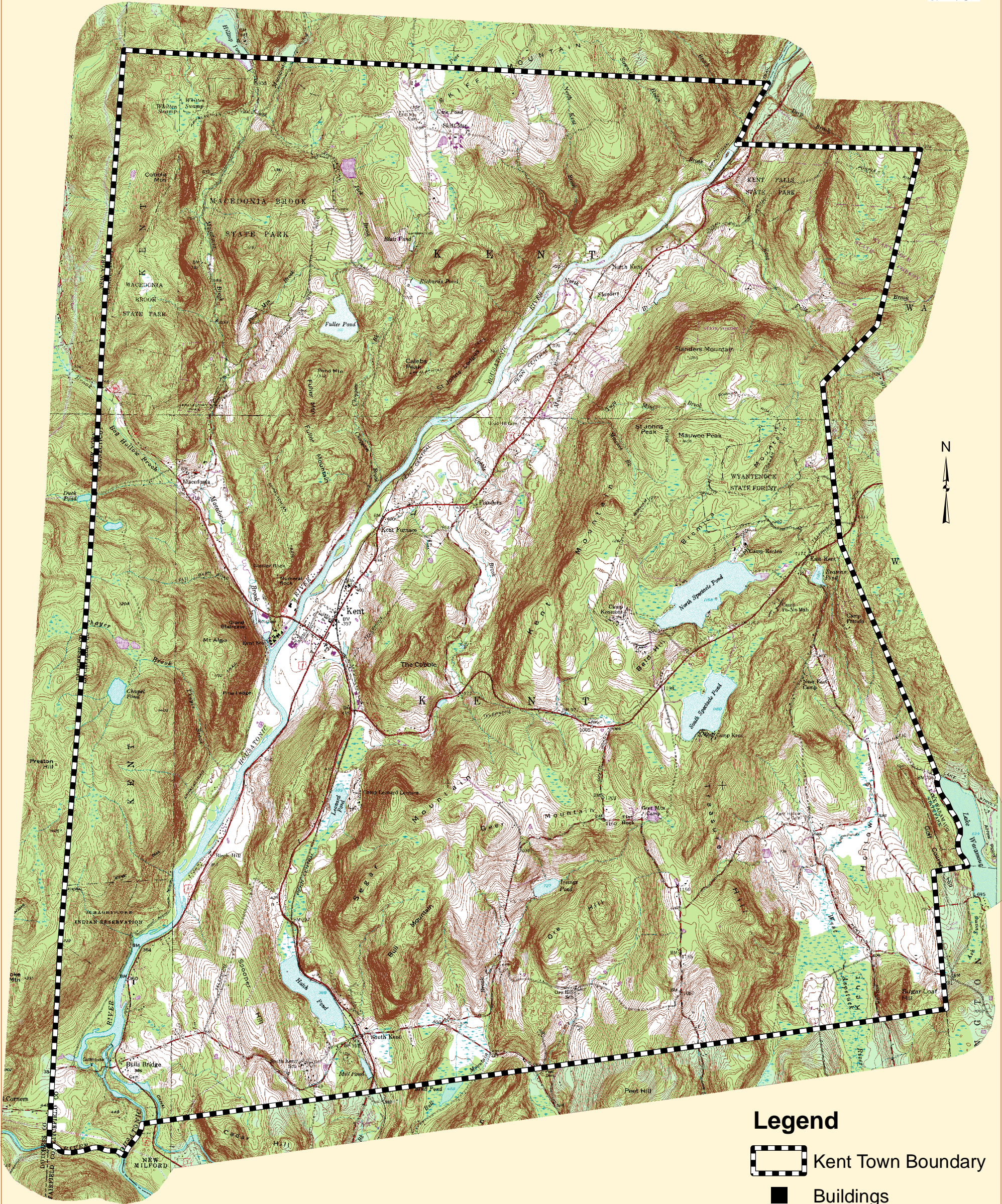


TOWN OF KENT, CONNECTICUT

3. USGS Topo Map



Legend

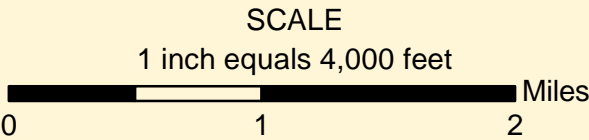
-  Kent Town Boundary
-  Buildings
-  10' Contours
-  Watercourses
- Cover Types**
-  Water
-  Marsh
-  Forest

Map prepared on 02/29/08 by
Kirk Sinclair, PhD, GIS Manager
Housatonic Valley Association
150 Kent Road, PO Box 28
Cornwall Bridge, CT 06754
Phone: 860-672-6678
Email: hvamaps@optonline.net

This map is not to be construed as an accurate
survey and is subject to change.

DATA SOURCES
Topo maps were obtained from the Environmental
GIS Data distributed by the Connecticut DEP.

Topographic Mapping Dates
Amenia Quad 1984 (Photo Revised)
Ellsworth Quad 1976 (Photo Inspected)
Dover Plains Quad 1984 (Photo Revised)
Kent Quad 1976 (Photo Inspected)



Town Resources Map Series
Sponsored by the Kent Conservation Commission