



## STREETSCAPE PROJECT UPDATE

A few notables for this week:

Some great news - *the project is over halfway complete!*

- As we head into a busy October for businesses, please keep in mind everyone's safety as construction continues along the most active section of the project:
  - **When driving...**
    - ***SLOW DOWN, SLOW DOWN, SLOW DOWN.*** Increased pedestrian traffic and unfamiliar traffic patterns increase the potential for accidents. Getting through town will continue to take a little longer and plan to sit in line while the flaggers are routing traffic.
    - If possible, take a different route - use our local roads as an alternative if possible.
    - Pay close attention to the flagger's directions.
  - **When walking...**
    - Please remember the cones, barrels and caution tape indicate a construction zone, and pedestrians *should not* be walking within these areas.
    - Stay alert to some small areas of active construction along the otherwise finished sections.
- Please continue to be aware of increased traffic in the area of Bridge and Elizabeth Streets between 7:45 - 8:30a, and again between 2:45 - 3:30p due to Kent Center School drop-off and pick up times. Follow flagger instructions and be aware of changing traffic patterns.

### October 3rd - 17th

#### Two Week Look Ahead

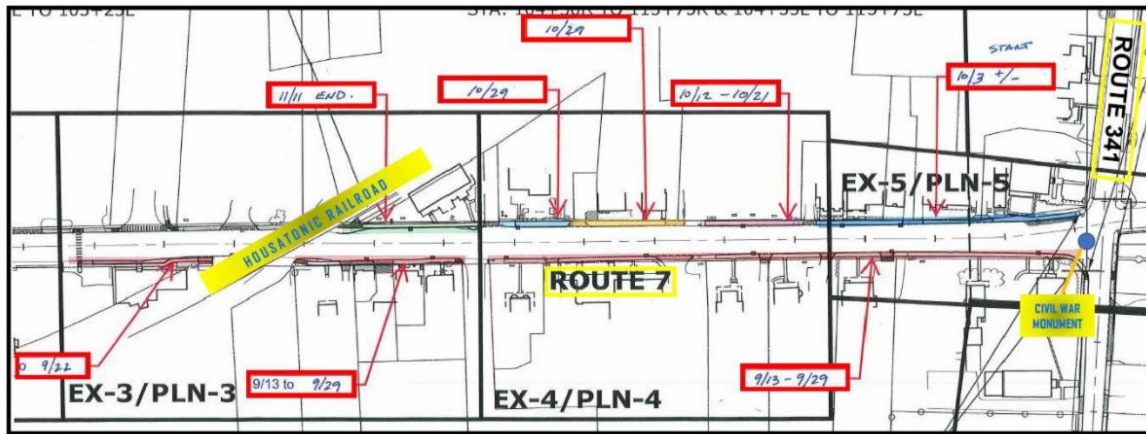
- **This week:** Due to the increase expected in the coming weeks, the crews will spend this week focusing on finishing up all work currently under construction. This includes both sides of Bridge Street, both sides of North Main Street north of the railroad tracks, and the southbound side of North Main Street to the intersection.
- **Next week:** Demolition of the northbound side of North Main Street will begin at the intersection and continue north until completed.

#### Additional Information

- Schedule information provided here is always subject to change due to weather, etc.
- Bruce Bennett, Town Tree Warden, is working with property owners on replacement trees for any trees that had to be removed.
- Below is a map with anticipated timeline for the project - *this is for informational*

*purposes only and subject to change depending on multiple variables including weather.*

**\*NOTE: MAP IS FOR ESTIMATING PURPOSES ONLY AND DATES ARE SUBJECT TO MULTIPLE VARIABLES INCLUDING WEATHER.**



**Join the Town of Kent Newsletter listserv**

You can also join the Town of Kent's Newsletter listserv via text by simply texting  
"KENT" to 42828.

**visit our website: [www.townofkentct.org](http://www.townofkentct.org)**

Town of Kent | PO Box 678, Kent, CT 06757

[Unsubscribe firstselectman@townofkentct.org](mailto:firstselectman@townofkentct.org)

[Update Profile](#) | [Constant Contact Data Notice](#)

Sent by [firstselectman@townofkentct.org](mailto:firstselectman@townofkentct.org) powered by



Try email marketing for free today!