



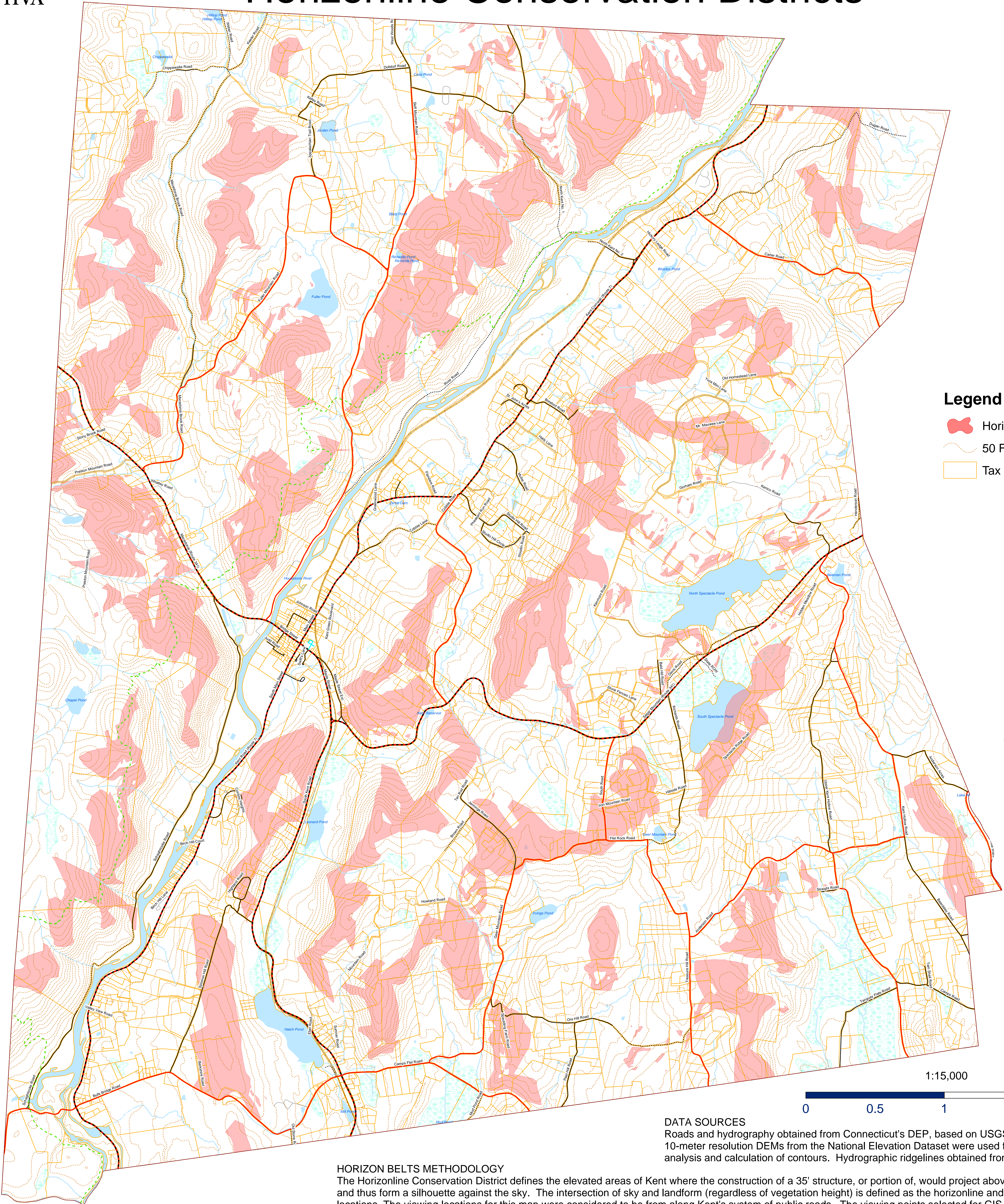
TOWN OF KENT, CONNECTICUT

Horizonline Conservation Districts

Map prepared on 4/14/05 by
Kirk Sinclair, PhD, GIS Manager
Housatonic Valley Association
150 Kent Road, PO Box 28
Cornwall Bridge, CT 06754

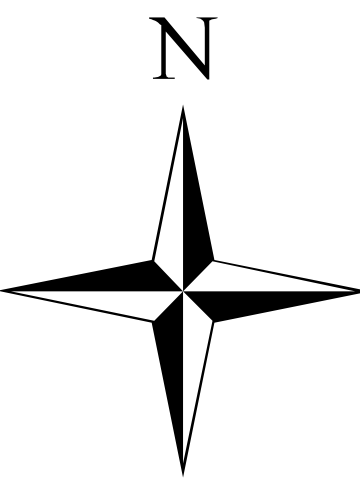
Phone: 860-672-6678
Email: hvamaps@optonline.net

This map is not to be construed
as an accurate survey.



Legend

- Horizon Belts
- 50 Foot Contours
- Tax Parcels



1:15,000

0 0.5 1 2 Miles

DATA SOURCES
Roads and hydrography obtained from Connecticut's DEP, based on USGS DLG files.
10-meter resolution DEMs from the National Elevation Dataset were used for the viewshed analysis and calculation of contours. Hydrographic ridgelines obtained from DEP's subbasins data.

HORIZON BELTS METHODOLOGY
The Horizonline Conservation District defines the elevated areas of Kent where the construction of a 35' structure, or portion of, would project above the natural topography and thus form a silhouette against the sky. The intersection of sky and landform (regardless of vegetation height) is defined as the horizonline and is specific to viewing locations. The viewing locations for this map were considered to be from along Kent's system of public roads. The viewing points selected for GIS analysis include road intersections, town boundaries, and hydrographic ridgelines. The horizon belts selected for protection were those within 1000 feet of a ridge or overlaying slopes $\geq 15\%$.