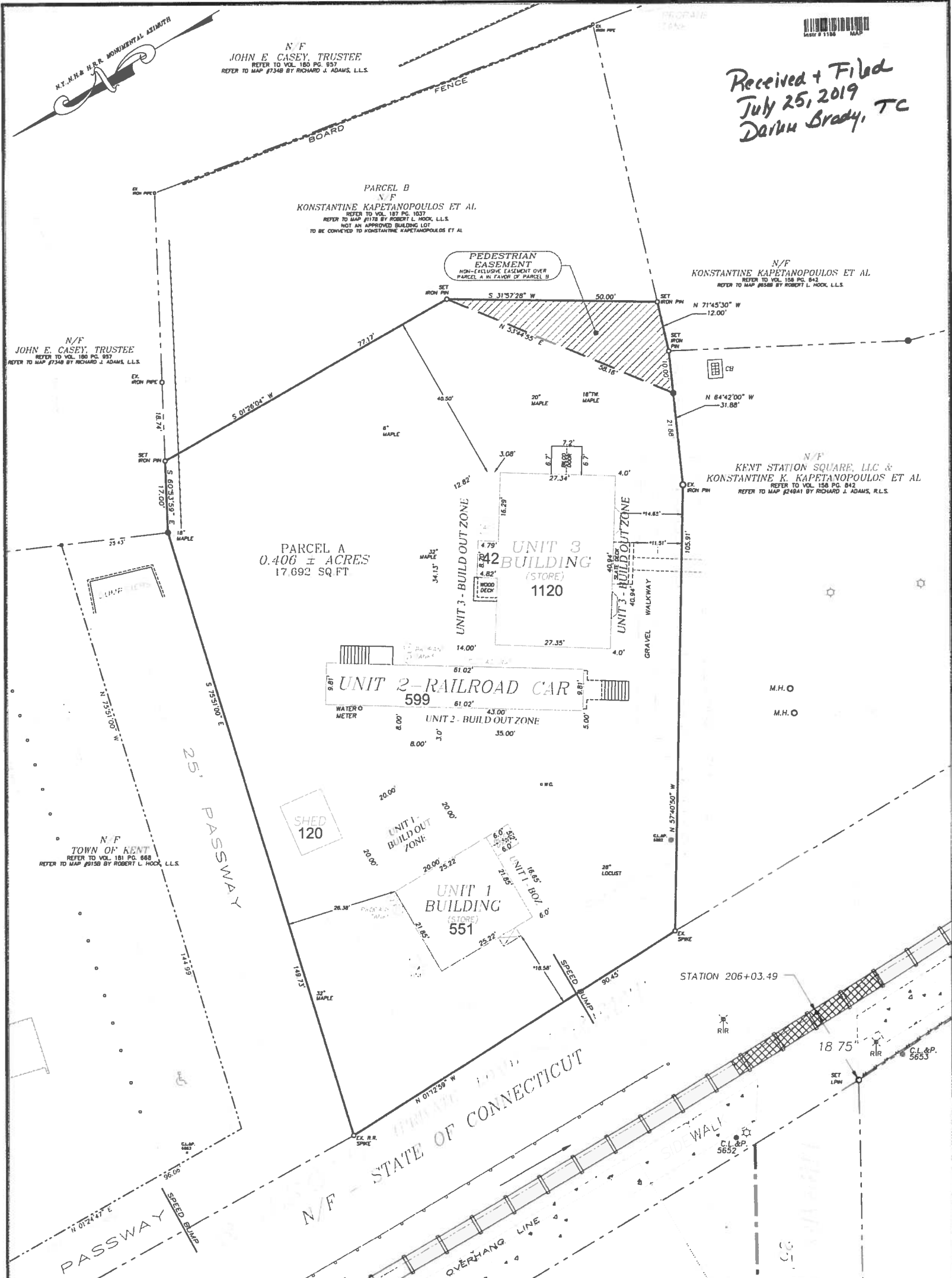


6.B.4.

SAFECO PRODUCTS • NEW HAVEN, CONNECTICUT  
 SAFECO PRODUCTS • NEW HAVEN, CONNECTICUT  
 SAFECO PRODUCTS • NEW HAVEN, CONNECTICUT  
 SAFECO PRODUCTS • NEW HAVEN, CONNECTICUT



Received + Filed  
 July 25, 2019  
 Darin Brady, TC

ZONING COMPLIANCE TABLE - VC-MU ZONING DISTRICT		
ITEM	REQUIRED	PROPOSED
MIN. LOT AREA	10,000 SF	17,692 SF
MIN. SETBACK, FRONT	AVERAGE	N/A (18.58 FT)
MIN. SETBACK, SIDE	15 FT.	14.65 FT.
MIN. SETBACK, REAR	40 FT.	40.50 FT.
MAX. COVERAGE - PRINCIPAL	35% - 6,192 SF	6.6% - 1,162 SF
MAX. COVERAGE - ALL BLDGS	40% - 7,077 SF	13.7% - 2,432 SF
MAX. BUILDING HEIGHT	35 FT.	20 FT. +/-
MIN. FRONTAGE ON PUBLIC STREET	N/A	N/A

0.406 ± ACRES  
 PROPERTY SURVEY SHOWING  
**KENT STATION SQUARE**  
**CONDOMINIUM**  
 PREPARED FOR  
**KAREN J. BUTLER**  
 #9 RAILROAD STREET  
 KENT, CONNECTICUT  
 SCALE 1" = 10' APRIL 5, 2019  
 To the best of my knowledge and belief this map is substantially correct as noted hereon.



ROBERT L. ROCK LICENSED LAND SURVEYOR LLC - LIC. #8499 KENT, CT