

34

TOWN OF KENT INLAND WETLANDS COMMISSION

41 Kent Green Boulevard
P.O. Box 678
Kent, CT 06757
Phone (860) 927-4625 Fax (860) 927-1313

RECEIVED
By Darlene Brady at 2:22 pm, Feb 23, 2021

REGULAR MEETING MINUTES

The Kent Inland Wetlands Commission held a regular meeting on February 22, 2021 at 7:00 p.m. via Zoom.

1. CALL TO ORDER

Ms. Werner called the meeting to order at 7:00 p.m. via Zoom.

2. ROLL CALL AND APPOINTMENT OF ALTERNATES, IF REQUIRED

Commissioners Present: Lynn Werner, Chairman; Marge Smith, Ken Deitz, and Ken Johnson

Staff Present: Donna Hayes, Land Use Administrator and Tai Kern, Land Use Clerk

3. READING OF MINUTES OF PREVIOUS MEETINGS

3.A. Regular Meeting Minutes, January 25, 2021.

Ms. Smith moved to approve the Regular Minutes of the January 25, 2021. Mr. Johnson seconded and the motion carried unanimously.

4. NEW BUSINESS

4.A. Application #1249-21, Brian Neff, LE, for Michael Martin, 0 Kenmont Road, Map 15 Block 22 Lot 93, construction of single-family dwelling, detached garage, driveway, well, septic and associated site work.

Brian Neff came forward and reviewed the application for a single family dwelling on an undeveloped lot. He reported that there are quite a bit of wetlands on the property. Just about the entire lot is within the regulated area. The topography is flat. The group reviewed the site plan and Mr. Neff noted that he worked to maintain a buffer between the site and the brook. The septic and leaching field are partially in the regulated area. The closest part of the septic is about 15 feet away from the wetlands. Due to the ledge in the area they could not locate the septic outside of the regulated area.

Donna Hayes agreed to view the site prior to the next meeting and will report on her findings.

Ms. Smith moved table application #1249-21, Brian Neff, LE, for Michael Martin, 0 Kenmont Road, Map 15 Block 22 Lot 93, construction of single-family dwelling, detached garage, driveway, well, septic and associated site work. Mr. Deitz seconded and the motion carried unanimously.

Kent Inland Wetlands Regular Meeting Minutes 02/22/2021

These are draft minutes. Corrections may be made by the Commission at the subsequent meeting. Please refer to subsequent meeting minutes for possible corrections and approval of these minutes.

- 4.B. Application #1250-21, Brian Neff, LE, for Benjamin Rosen, 23 Mauwee Brook Way, Map 9 Block 22 Lot 3, conversion of existing lawn on the south side of the house and motor court into a grass lined walking path with plantings on both sides and drainage directed away from the brook.

Brian Neff came forward and reviewed the proposal to create a 10 foot wide lawn area to a grass-lined path with plantings along the sides. Drainage will be installed to pick up water that will flow along the sides of the path. Catch basins with less than 4" piping will discharge the water away from the brook. He agreed to submit the planting plan upon its availability.

Donna Hayes reported that she is familiar with the site and finds no issues with this proposal.

Ms. Smith moved table application #1250-21, Brian Neff, LE, for Benjamin Rosen, 23 Mauwee Brook Way, Map 9 Block 22 Lot 3, conversion of existing lawn on the south side of the house and motor court into a grass lined walking path with plantings on both sides and drainage directed away from the brook. Mr. Deitz seconded and the motion carried unanimously.

- 4.C. Modification to Application #1168-18, High Watch Recovery Center, Inc., 54 & 62 Carter Road, addition to existing administration building parking area, drainage basin and associated grading, Map 14 Block Lots 6 & 7; **modification to include removal of elevated boardwalk structure on the southwest side of the property and adjacent to the new detox facility and revise the associated grading to allow for the continuation of an uninterrupted at-grade walking surface.**

The group discussed this is a request to fill the wetland. Donna Hayes reported that they would like to provide access for the ambulance without having to go through the front of the building. The group remembered that the area in question was a problematic area during the original approval.

Mike Doherty and Jason Perillo came forward as agents. Mr. Doherty reviewed the proposed change to the previously approved 75 foot long by 4 feet wide boardwalk. He explained that the accessible parking area slopes and they cannot gain access to the detox wing for emergency services. The new plan would include grading and filling of about 2100 square feet of wetland. There would be an increase in the planted buffer by two and one-half times and grass pavers would be installed for the emergency vehicles to drive upon.

Chair Werner reminded the group that the boardwalk was agreed to be mitigation for potential impacts because there were serious concerns with filling the wetlands in the original approval. Ken Deitz noted on the site plan where the emergency access already exists. Mr. Doherty explained that, due to grades, the access is on a much higher plateau.

Chair Werner noted that filling in a wetland is not a good precedent if there is an alternative. Part of the original approval was these mitigations. It was clarified that what the applicants are asking the Commission is to eliminate the mitigation plan that was part of the original approval process.

The members did not see a need for this other than convenience. The members reminded the group that this was discussed in the many months of meetings that they had for this approval. It was asked that the applicants rethink this proposal.

Jason Perillo reviewed the two emergency access areas to the detox unit. He explained that they would like to find a safer way to access the unit that would keep the patients out of the elements. Mr. Perillo reported that the ambulance chief has agreed that this would be an improvement.

Ms. Werner noted that the applicants had to be aware of this when they presented the original plan and it seems like the applicants agreed to a mitigation plan that they knew would need to be modified. She asked how they would not be aware of this problem in their original plan. Mr. Perillo explained that they do not do this kind of project all the time and this is a new process for High Watch.

Donna Hayes reported that the Fire Marshal and Building Official noted concerns that the 10 feet being proposed is cutting it close for ample access. She is concerned that High Watch will return once they realize this to modify once again resulting in the removal of the plantings meant to mitigate.

Mr. Perillo asked that the Commission table this application while they attempt to find an alternative. The group agreed to schedule a tentative site walk for March 21, 2021 at 9:00 a.m.

Ms. Smith moved table Modification to Application #1168-18, High Watch Recovery Center, Inc., 54 & 62 Carter Road, addition to existing administration building parking area, drainage basin and associated grading, Map 14 Block Lots 6 & 7; modification to include removal of elevated boardwalk structure on the southwest side of the property and adjacent to the new detox facility and revise the associated grading to allow for the continuation of an uninterrupted at-grade walking surface. Mr. Deitz seconded and the motion carried unanimously.

- 4.D. Application #1251-21, Sam Sabin for Ashley Shackelton, 398A Segar Mountain Road, Map 16 Block 25 Lot 11, construction of tennis court with fencing and clearing and seeding meadow.

Sam Sabin came forward and reported that the proposed tennis court is outside of the regulated area. The proposed wetland meadow adjacent to the court is within the regulated area. There would be a one to two mowings yearly. The limit of construction will be within the regulated area. Access will be from the existing driveway. Total disturbance within the regulated area is about one half acre.

The Commission asked that Donna Hayes view the site to determine if the regulated area on the side brook should be identified on the map.

Ms. Smith moved to table application #1251-21, Sam Sabin for Ashley Shackelton, 398A Segar Mountain Road, Map 16 Block 25 Lot 11, construction of tennis court with fencing and clearing and seeding meadow. Mr. Deitz seconded and the motion carried unanimously.

5. OLD BUSINESS

- 5.A. Application #1242-20, Stefan Peters & Ashley Rosebrook, 99 Macedonia Brook Road, Map 2 Block 5 Lot 13, improvement to pre-existing, non-conforming driveway, demolition of existing garage and rebuild new with parking area and breezeway to existing house; inground swimming pool, equipment and pool deck.

Donna Hayes reported that they have no new information for review. The applicants have requested an extension.

Mr. Smith moved to accept extension of application #1242-20, Stefan Peters & Ashley Rosebrook, 99 Macedonia Brook Road, Map 2 Block 5 Lot 13, improvement to pre-existing, non-conforming driveway, demolition of existing garage and rebuild new with parking area and breezeway to existing house; inground swimming pool, equipment and pool deck. Mr. Deitz seconded and the motion carried unanimously.

- 5.B.** Application #1244-21, Craig Bibb, 80 Lake Waramaug Road, Map 17 Block 27 Lot 11, removal of dead and deceased trees from wetlands and regulated area.

Craig Bibb came forward and reviewed a 2018 forester report regarding his site noting some of the issues with the dying trees. He reported that this process seems to be accelerating in recent years. A total of 67 trees of the 470 trees are proposed to be removed.

Donna Hayes reported on the site visit and questioned whether there will be many trees remaining after the proposed removal. The members agreed that this proposal was a good idea with the condition that mitigation may be needed after viewing the site in July 2022.

Ms. Smith moved to approve application #1244-21, Craig Bibb, 80 Lake Waramaug Road, Map 17 Block 27 Lot 11, removal of dead and deceased trees from wetlands and regulated area with the condition that possible mitigation will be required after July 2022. Mr. Deitz seconded and the motion carried unanimously.

- 5.C.** Application #1246-21F, Nick Yanick for Preston Mountain Club, 14 Preston Mountain Road, Map 3 Block 3 Lot 1, heavy thinning of approximately 80 acres and clean-up of storm damaged trees.

Nick Yanick came forward. Donna Hayes reported that the letter from the forester responding to the Commission's questions dated February 19, 2021 was received. She read the letter aloud that noted the types of trees on the property and the lifted requirements regarding the emerald ash borer.

Mr. Deitz moved to approve Application #1246-21F, Nick Yanick for Preston Mountain Club, 14 Preston Mountain Road, Map 3 Block 3 Lot 1, heavy thinning of approximately 80 acres and clean-up of storm damaged trees. Mr. Johnson seconded and the motion carried unanimously.

- 5.D.** Application #1247-21, Paul Szymanski, PE, Arthur H. Howland & Associates, PC, for Raphael and Courtney Posner, 21 Oak Ridge Road, Map 10 Block 41, Lot 19, construction of a one-bedroom, detached dwelling unit/pool house, driveway, proposed deck, subsurface sewage disposal system, grading and other related site work.

Paul Szymanski came forward and reported that the site plan was updated to label the proposed activity and note the wetland flagging. An overview map of the property was reviewed. The Commission agreed that they received everything they requested.

Ms. Smith moved to approve and the application #1247-21, Paul Szymanski, PE, Arthur H. Howland & Associates, PC, for Raphael and Courtney Posner, 21 Oak Ridge Road, Map 10 Block 41, Lot 19, construction of a one-bedroom, detached dwelling unit/pool house, driveway, proposed deck, subsurface sewage disposal system, grading and other related site work. Mr. Johnson seconded and the motion carried unanimously.

- 5.E.** Application #1248-21, Brian D. Wood for Balis, Bibb, Spring & Holland, 0 Lake Waramaug Road, Map 17 Block 27 Lot 10, improve shoreline access/recreational area; removal of dead, diseased and dying trees; removal and management of invasive species; and, preservation of existing natural area.

Brian Wood came forward and reported that a couple of the owners have signed the agreement and it will be filed on the land records once the permit is granted. Donna Hayes reported that Attorney Mike Zizka has advised that

any one of the property owners has the right to sign the application. Any differences between the owners would not be a matter for the Commission's concern. It was confirmed that Mr. Wood is authorized to act as their agent.

Mr. Wood reviewed the stock piles for each site and disturbance areas. Straw bales will be used to stabilize the site.

The Commission explained the time frames and that once one owner begins their work then all the owners will have one year to complete the project.

Ms. Smith moved to approve application #1248-21, Brian D. Wood for Balis, Bibb, Spring & Holland, 0 Lake Waramaug Road, Map 17 Block 27 Lot 10, improve shoreline access/recreational area; removal of dead, diseased and dying trees; removal and management of invasive species; and, preservation of existing natural area. Mr. Deitz seconded and the motion carried unanimously.

6. **COMMUNICATIONS TO THE COMMISSION**

A. **WRITTEN**: N/A

B. **VERBAL**: Donna Hayes reported that she confirmed with Mike Zizka that he would be willing to act as the IWC's attorney should legal advice be required.

7. **ADJOURNMENT**

Mr. Johnson moved to adjourn at 9:20 p.m. Mr. Deitz seconded and the motion carried unanimously.

Respectfully submitted.

Tai Kern

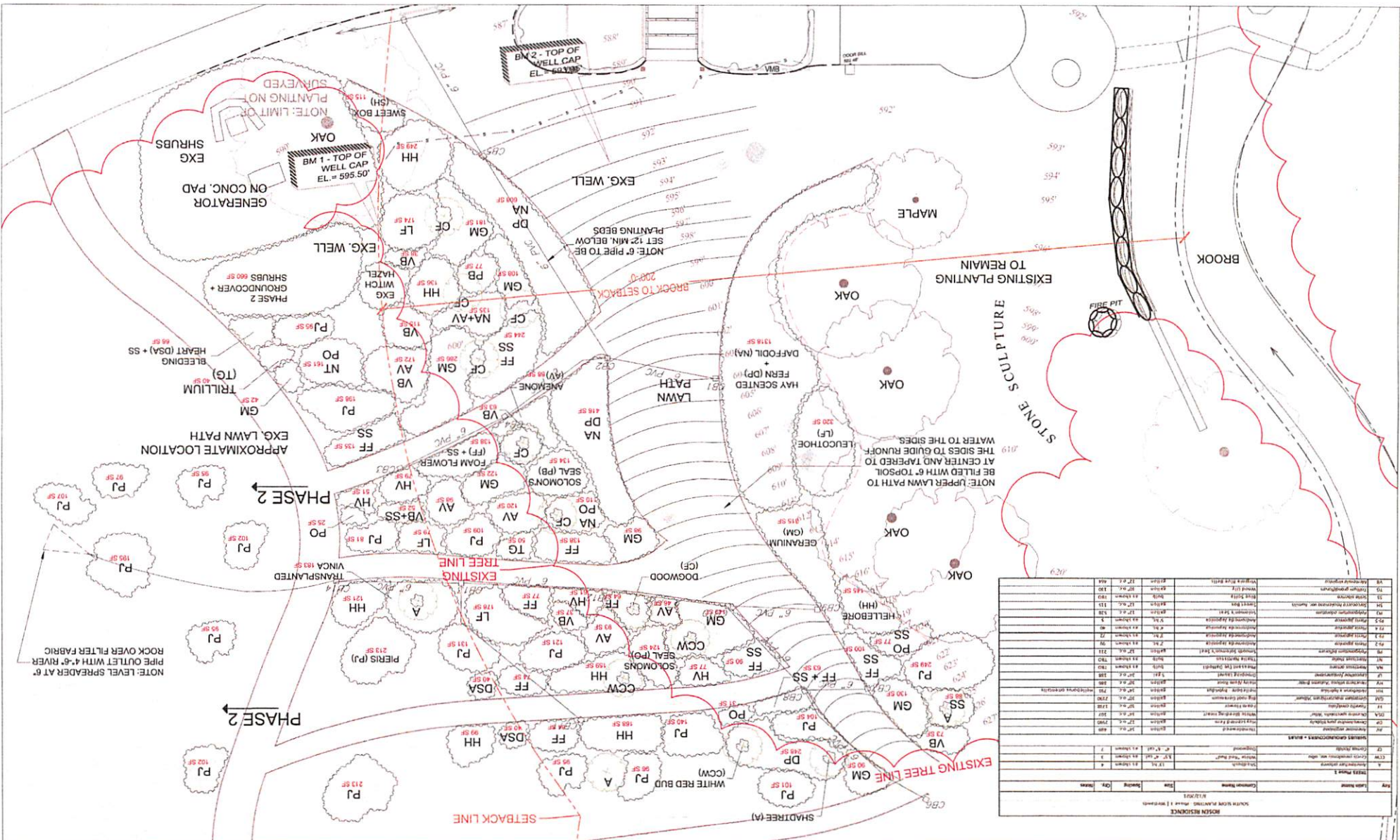
Tai Kern,
Land Use Clerk



DEBORAH NEVINS & ASSOCIATES, INC.
LANDSCAPE DESIGN
2-15-2021
R.N.V. 1818 5-15-2021

PROPOSED SOUTH LAWN LANDSCAPE PLAN
THE ROSEN RESIDENCE
23 MAUREE BROOK WAY
KENT, CONNECTICUT

Scale: 1"=10'-0"



PLANT	COMMON NAME	SIZE	SPACING	QTY	REMARKS
GM	Gardenia	12" x 12"	12"	1	131 SF
FF	Fern	12" x 12"	12"	1	104 SF
PJ	Pieris	12" x 12"	12"	1	102 SF
AV	Aster	12" x 12"	12"	1	93 SF
GM	Gardenia	12" x 12"	12"	1	131 SF
FF	Fern	12" x 12"	12"	1	104 SF
PJ	Pieris	12" x 12"	12"	1	102 SF
AV	Aster	12" x 12"	12"	1	93 SF
GM	Gardenia	12" x 12"	12"	1	131 SF
FF	Fern	12" x 12"	12"	1	104 SF
PJ	Pieris	12" x 12"	12"	1	102 SF
AV	Aster	12" x 12"	12"	1	93 SF
GM	Gardenia	12" x 12"	12"	1	131 SF
FF	Fern	12" x 12"	12"	1	104 SF
PJ	Pieris	12" x 12"	12"	1	102 SF
AV	Aster	12" x 12"	12"	1	93 SF
GM	Gardenia	12" x 12"	12"	1	131 SF
FF	Fern	12" x 12"	12"	1	104 SF
PJ	Pieris	12" x 12"	12"	1	102 SF
AV	Aster	12" x 12"	12"	1	93 SF
GM	Gardenia	12" x 12"	12"	1	131 SF
FF	Fern	12" x 12"	12"	1	104 SF
PJ	Pieris	12" x 12"	12"	1	102 SF
AV	Aster	12" x 12"	12"	1	93 SF
GM	Gardenia	12" x 12"	12"	1	131 SF
FF	Fern	12" x 12"	12"	1	104 SF
PJ	Pieris	12" x 12"	12"	1	102 SF
AV	Aster	12" x 12"	12"	1	93 SF
GM	Gardenia	12" x 12"	12"	1	131 SF
FF	Fern	12" x 12"	12"	1	104 SF
PJ	Pieris	12" x 12"	12"	1	102 SF
AV	Aster	12" x 12"	12"	1	93 SF
GM	Gardenia	12" x 12"	12"	1	131 SF
FF	Fern	12" x 12"	12"	1	104 SF
PJ	Pieris	12" x 12"	12"	1	102 SF
AV	Aster	12" x 12"	12"	1	93 SF
GM	Gardenia	12" x 12"	12"	1	131 SF
FF	Fern	12" x 12"	12"	1	104 SF
PJ	Pieris	12" x 12"	12"	1	102 SF
AV	Aster	12" x 12"	12"	1	93 SF
GM	Gardenia	12" x 12"	12"	1	131 SF
FF	Fern	12" x 12"	12"	1	104 SF
PJ	Pieris	12" x 12"	12"	1	102 SF
AV	Aster	12" x 12"	12"	1	93 SF
GM	Gardenia	12" x 12"	12"	1	131 SF
FF	Fern	12" x 12"	12"	1	104 SF
PJ	Pieris	12" x 12"	12"	1	102 SF
AV	Aster	12" x 12"	12"	1	93 SF
GM	Gardenia	12" x 12"	12"	1	131 SF
FF	Fern	12" x 12"	12"	1	104 SF
PJ	Pieris	12" x 12"	12"	1	102 SF
AV	Aster	12" x 12"	12"	1	93 SF
GM	Gardenia	12" x 12"	12"	1	131 SF
FF	Fern	12" x 12"	12"	1	104 SF
PJ	Pieris	12" x 12"	12"	1	102 SF
AV	Aster	12" x 12"	12"	1	93 SF
GM	Gardenia	12" x 12"	12"	1	131 SF
FF	Fern	12" x 12"	12"	1	104 SF
PJ	Pieris	12" x 12"	12"	1	102 SF
AV	Aster	12" x 12"	12"	1	93 SF
GM	Gardenia	12" x 12"	12"	1	131 SF
FF	Fern	12" x 12"	12"	1	104 SF
PJ	Pieris	12" x 12"	12"	1	102 SF
AV	Aster	12" x 12"	12"	1	93 SF
GM	Gardenia	12" x 12"	12"	1	131 SF
FF	Fern	12" x 12"	12"	1	104 SF
PJ	Pieris	12" x 12"	12"	1	102 SF
AV	Aster	12" x 12"	12"	1	93 SF
GM	Gardenia	12" x 12"	12"	1	131 SF
FF	Fern	12" x 12"	12"	1	104 SF
PJ	Pieris	12" x 12"	12"	1	102 SF
AV	Aster	12" x 12"	12"	1	93 SF
GM	Gardenia	12" x 12"	12"	1	131 SF
FF	Fern	12" x 12"	12"	1	104 SF
PJ	Pieris	12" x 12"	12"	1	102 SF
AV	Aster	12" x 12"	12"	1	93 SF
GM	Gardenia	12" x 12"	12"	1	131 SF
FF	Fern	12" x 12"	12"	1	104 SF
PJ	Pieris	12" x 12"	12"	1	102 SF
AV	Aster	12" x 12"	12"	1	93 SF
GM	Gardenia	12" x 12"	12"	1	131 SF
FF	Fern	12" x 12"	12"	1	104 SF
PJ	Pieris	12" x 12"	12"	1	102 SF
AV	Aster	12" x 12"	12"	1	93 SF
GM	Gardenia	12" x 12"	12"	1	131 SF
FF	Fern	12" x 12"	12"	1	104 SF
PJ	Pieris	12" x 12"	12"	1	102 SF
AV	Aster	12" x 12"	12"	1	93 SF
GM	Gardenia	12" x 12"	12"	1	131 SF
FF	Fern	12" x 12"	12"	1	104 SF
PJ	Pieris	12" x 12"	12"	1	102 SF
AV	Aster	12" x 12"	12"	1	93 SF
GM	Gardenia	12" x 12"	12"	1	131 SF
FF	Fern	12" x 12"	12"	1	104 SF
PJ	Pieris	12" x 12"	12"	1	102 SF
AV	Aster	12" x 12"	12"	1	93 SF
GM	Gardenia	12" x 12"	12"	1	131 SF
FF	Fern	12" x 12"	12"	1	104 SF
PJ	Pieris	12" x 12"	12"	1	102 SF
AV	Aster	12" x 12"	12"	1	93 SF
GM	Gardenia	12" x 12"	12"	1	131 SF
FF	Fern	12" x 12"	12"	1	104 SF
PJ	Pieris	12" x 12"	12"	1	102 SF
AV	Aster	12" x 12"	12"	1	93 SF
GM	Gardenia	12" x 12"	12"	1	131 SF
FF	Fern	12" x 12"	12"	1	104 SF
PJ	Pieris	12" x 12"	12"	1	102 SF
AV	Aster	12" x 12"	12"	1	93 SF
GM	Gardenia	12" x 12"	12"	1	131 SF
FF	Fern	12" x 12"	12"	1	104 SF
PJ	Pieris	12" x 12"	12"	1	102 SF
AV	Aster	12" x 12"	12"	1	93 SF
GM	Gardenia	12" x 12"	12"	1	131 SF
FF	Fern	12" x 12"	12"	1	104 SF
PJ	Pieris	12" x 12"	12"	1	102 SF
AV	Aster	12" x 12"	12"	1	93 SF
GM	Gardenia	12" x 12"	12"	1	131 SF
FF	Fern	12" x 12"	12"	1	104 SF
PJ	Pieris	12" x 12"	12"	1	102 SF
AV	Aster	12" x 12"	12"	1	93 SF
GM	Gardenia	12" x 12"	12"	1	131 SF
FF	Fern	12" x 12"	12"	1	104 SF
PJ	Pieris	12" x 12"	12"	1	102 SF
AV	Aster	12" x 12"	12"	1	93 SF
GM	Gardenia	12" x 12"	12"	1	131 SF
FF	Fern	12" x 12"	12"	1	104 SF
PJ	Pieris	12" x 12"	12"	1	102 SF
AV	Aster	12" x 12"	12"	1	93 SF
GM	Gardenia	12" x 12"	12"	1	131 SF
FF	Fern	12" x 12"	12"	1	104 SF
PJ	Pieris	12" x 12"	12"	1	102 SF
AV	Aster	12" x 12"	12"	1	93 SF
GM	Gardenia	12" x 12"	12"	1	131 SF
FF	Fern	12" x 12"	12"	1	104 SF
PJ	Pieris	12" x 12"	12"	1	102 SF
AV	Aster	12" x 12"	12"	1	93 SF
GM	Gardenia	12" x 12"	12"	1	131 SF
FF	Fern	12" x 12"	12"	1	104 SF
PJ	Pieris	12" x 12"	12"	1	102 SF
AV	Aster	12" x 12"	12"	1	93 SF
GM	Gardenia	12" x 12"	12"	1	131 SF
FF	Fern	12" x 12"	12"	1	104 SF
PJ	Pieris	12" x 12"	12"	1	102 SF
AV	Aster	12" x 12"	12"	1	93 SF
GM	Gardenia	12" x 12"	12"	1	131 SF
FF	Fern	12" x 12"	12"	1	104 SF
PJ	Pieris	12" x 12"	12"	1	102 SF
AV	Aster	12" x 12"	12"	1	93 SF
GM	Gardenia	12" x 12"	12"	1	131 SF
FF	Fern	12" x 12"	12"	1	104 SF
PJ	Pieris	12" x 12"	12"	1	102 SF
AV	Aster	12" x 12"	12"	1	93 SF
GM	Gardenia	12" x 12"	12"	1	131 SF
FF	Fern	12" x 12"	12"	1	104 SF
PJ	Pieris	12" x 12"	12"	1	102 SF
AV	Aster	12" x 12"	12"	1	93 SF
GM	Gardenia	12" x 12"	12"	1	131 SF
FF	Fern	12" x 12"	12"	1	104 SF
PJ	Pieris	12" x 12"	12"	1	102 SF
AV	Aster	12" x 12"	12"	1	93 SF
GM	Gardenia	12" x 12"	12"	1	131 SF
FF	Fern	12" x 12"	12"	1	104 SF
PJ	Pieris	12" x 12"	12"	1	102 SF
AV	Aster	12" x 12"	12"	1	93 SF
GM	Gardenia	12" x 12"	12"	1	131 SF
FF	Fern	12" x 12"	12"	1	104 SF
PJ	Pieris	12" x 12"	12"	1	102 SF
AV	Aster	12" x 12"	12"	1	93 SF
GM	Gardenia	12" x 12"	12"	1	131 SF
FF	Fern	12" x 12"	12"	1	104 SF
PJ	Pieris	12" x 12"	12"	1	102 SF
AV	Aster	12" x 12"	12"	1	93 SF
GM	Gardenia	12" x 12"	12"	1	131 SF
FF	Fern	12" x 12"	12"	1	104 SF
PJ	Pieris	12" x 12"	12"	1	102 SF
AV	Aster	12" x 12"	12"	1	93 SF
GM	Gardenia	12" x 12"	12"	1	131 SF
FF	Fern	12" x 12"	12"	1	104 SF
PJ	Pieris	12" x 12"	12"	1	102 SF
AV	Aster	12" x 12"	12"	1	93 SF
GM	Gardenia	12" x 12"	12"	1	131 SF
FF	Fern	12" x 12"	12"	1	104 SF
PJ	Pieris	12" x 12"	12"	1	102 SF
AV	Aster	12" x 12"	12"	1	93 SF
GM	Gardenia	12" x 12"	12"	1	131 SF
FF	Fern	12" x 12"	12"	1	104 SF
PJ	Pieris	12" x 12"	12"	1	102 SF
AV	Aster	12" x 12"	12"	1	93 SF
GM	Gardenia	12" x 12"	12"	1	131 SF
FF	Fern	12" x 12"	12"	1	104 SF
PJ	Pieris	12" x 12"	12"	1	102 SF
AV	Aster	12" x 12"	12"	1	93 SF
GM	Gardenia	12" x 12"	12"	1	131 SF
FF	Fern	12" x 12"	12"	1	104 SF
PJ	Pieris	12" x 12"	12"	1	102 SF
AV	Aster	12" x			



March 2, 2021

Ms. Donna M. Hayes, Land Use Administrator
Town of Kent
41 Kent Green Boulevard
Kent, CT 06757

**Re: Site Plan Modification – High Watch Recovery Center Office and Dining Hall Addition
62 Carter Road
Kent, Connecticut
Permit #1168-18
SLR #16504.0002**

Dear Ms. Hayes,

After careful consideration of the Inland Wetland Commission's comments made at the February 22, 2021 meeting, High Watch Recovery Center has decided to withdraw the submitted site plan modification for revised access along the southwest side of the new detox building. A review of alternative emergency access proved to provide no other feasible options. High Watch staff and emergency services will utilize the exterior pedestrian walkways to and from the detox wing, when weather allows, to reduce patient traffic through the building. The boardwalk section and restoration planting plan will remain as originally approved.

We appreciate the commission's time on this matter. If you have any questions regarding the above comments, please contact me at (203) 271-1773.

Very truly yours,

SLR International Corporation

A handwritten signature in black ink, appearing to read "Michael T. Doherty".

Michael T. Doherty, PLA
Principal Landscape Architect

Enclosures



Connecticut Department of Energy & Environmental Protection
Bureau of Materials Management & Compliance Assurance
Engineering & Enforcement Division

Permit Application for the Use of Pesticides in State Waters

Please complete this form in accordance with section 22a-66z CGS and the instructions (DEEP-PEST-INST-200) in order to ensure the proper handling of your application. Print or type unless otherwise noted. You must submit the initial fee along with this form.

CPPU USE ONLY	
App #:	_____
Doc #:	_____
Check #:	_____
Program: Aquatic Pesticides	

Part I: Application Type and Description

This application is to request (check one):

One year permit Two year permit Three year permit

Note: Multi-year permits will be issued at the Department of Energy and Environmental Protection's (DEEP) discretion.

Check here if DEEP has previously issued an Aquatic Pesticide Permit for this site.

Permit Number for most recent permit: aqua 2017 429 To North East Tree Pond Services

Check here if the information contained in this application is identical to the last application and the chemicals, quantities and number of treatments requested are identical to the chemicals, quantities and number of treatments permitted by the most recent permit issued.

Town where site is located: Kent

Brief Description of Project: Aquatic Pesticide Application for Avian Pond

Part II: Fee Information

An application fee of \$200.00 [#1009] is to be submitted with each permit that you are applying for. Each site requires a separate permit. The application will not be processed without payment of the fee. If you are applying for a multi-year permit, see Part II of the instructions for information on fee payment. There is no discount for municipalities. The fee shall be non-refundable and shall be paid by check or money order to the Department of Energy and Environmental Protection.

Part III: Site Location

Name of Waterbody: Avian Pond

Street address and/or description of location: 346 Kent Cornwall Road

City/Town: Kent State: CT Zip Code: 06757

6A1

Part IV: Applicant Information

- If an applicant is a corporation, limited liability company, limited partnership, limited liability partnership, or a statutory trust, it must be registered with the Secretary of State. If applicable, the applicant's name shall be stated exactly as it is registered with the Secretary of State. This information can be accessed at CONCORD. (www.concord-sots.ct.gov/CONCORD/index.jsp)
- If an applicant is an individual, provide the legal name (include suffix) in the following format: First Name; Middle Initial; Last Name; Suffix (Jr, Sr., II, III, etc.).
- If there are any changes or corrections to your company/facility or individual mailing or billing address or contact information, please complete and submit the Request to Change Company/Individual Information to the address indicated on the form. If there is a change in name of the entity holding a DEEP license or a change in ownership, contact the Office of Planning and Program Development (OPPD) at 860-424-3003. For any other changes you must contact the specific program from which you hold a current DEEP license.

1. Applicant Name: Life-Lakes Inc

Mailing Address: 19 Sandy Pines Blvd

City/Town: Hopewell Jct

State: NY Zip Code: 12533

Business Phone: 845-227-8805

ext.:

Contact Person: Mark Roland

Phone: 8454941359 ext.

*E-mail: markroland@lifeincponds.com

*By providing this e-mail address you are agreeing to receive official correspondence from DEEP, at this electronic address, concerning the subject application. Please remember to check your security settings to be sure you can receive e-mails from "ct.gov" addresses. Also, please notify DEEP if your e-mail address changes.

- a) Applicant Type (check one): individual *business entity federal agency
 state agency municipality tribal

*If a business entity:

- i) check type: corporation limited liability company limited partnership
 limited liability partnership statutory trust Other: _____

- ii) provide Pesticide Application Business Registration Number and Registration expiration date:

B0133

- iii) provide Secretary of the State business ID #: 0622522 This information can be accessed at CONCORD

- iv) Check here if your business is **NOT** registered with the Secretary of State's office.

- b) Applicant's relationship to the property at which the proposed activity is to be located:

- site owner option holder lessee
 easement holder operator pesticide applicator
 other (specify): _____

- Check if any co-applicants. If so, attach additional sheet(s) with the required information as requested above.

2. Billing contact, if different than the applicant.

Name:

Mailing Address:

City/Town:

State: Zip Code:

Business Phone:

ext.:

Contact Person:

Phone: ext.

*E-mail:

6A1

Part IV: Applicant Information (continued)

3. Primary contact for departmental correspondence and inquiries, if different than the applicant.

Name:

Mailing Address:

City/Town:

State: CT

Zip Code:

Business Phone:

ext.:

Contact Person:

Phone:

ext.

*E-mail:

4. Owner Information

a. If known, list the name and address of all owners of the area(s) to be treated. If unsure, go to item #4b.

You can add rows to this table by using "tab" in the last row, in the last column.

Name of Owner	Address
Peter Pileski (Sole Owner)	346 Kent Cornwall Road Kent CT 06757

*If an area(s) to be treated is owned or controlled by the state of Connecticut, see instructions for submitting an application to the DEEP Land Acquisition and Management Unit (LAM) for review and approval of the proposed treatment on state property. A LAM Authorization letter must be submitted as Attachment G for any application involving treatment of a waterbody that is owned or controlled by the state of Connecticut.

6A

Part IV: Applicant Information (continued)

4b. If the applicant is unsure of who owns an area(s) to be treated, provide the name and address for all shoreline property owners located 200 feet or less from such area.

You can add rows to this table by using "tab" in the last row, in the last column.

Name of Shoreline Property Owner	Address

5. List the person or company applying the pesticides.

Name: **Life-Lakes Inc**

Mailing Address: 19 Sandy Pines Blvd

City/Town: Jopewell Jct

State: NY Zip Code: 12533

Business Phone: 8452278805

ext.:

Contact Person: Mark Roland

Phone: 845-494-1359 ext.

E-mail: markroland@lifeincponds.com

Certification Number: S-2940

Certification Expiration Date:

Part V: Additional Information

If the applicant is submitting this application on behalf of someone else, identify the person(s) or organization(s) seeking to have pesticides applied to the treatment area(s) and provide the following information. If more than one person or organization is being represented, attach additional sheets providing the information requested below.

Name: **Peter Pileski**

Mailing Address: 346 Kent Cornwall Road

City/Town: Kent

State: CT Zip Code: 06757

Business Phone: 646-708-3162

ext.:

Contact Person: Peter Pileski

Phone: 646-708-3162 ext. 1/31/24

*E-mail: peterpileski@gmail.com

Part VI: Site Information

6 A1

1. COASTAL AREA: Is the pesticide application located in a municipality within the coastal area?

Yes No (check town list in the instructions)

If yes, is the water being treated subject to the ebb and flow of the tides, or inundated by saline or brackish water at least once a month? Yes No

If the water being treated is subject to the ebb and flow of the tides, or is inundated by saline or brackish water at least once a month, you must submit a Coastal Consistency Review Form (DEEP-APP-004) with your application as Attachment C.

For assistance in determining if the water being treated is affected by tidal water as described above or in completing the Coastal Consistency Review form, contact the Office of Long Island Sound Programs (OLISP) at 860-424-3034.

2. NATURAL DIVERSITY DATA BASE (NDDDB) - ENDANGERED OR THREATENED SPECIES:

According to the most current "Natural Diversity Data Base Areas Maps", will the activity which is the subject of this application, including all impacted areas, be located within an area identified as, or otherwise known to be, a habitat for state listed endangered, threatened or special concern species?

Yes No Date of Map: 2/2021

If yes, complete and submit a Request for NDDDB State Listed Species Review Form (DEEP-APP-007) to the address specified on the form, prior to submitting this application. Please note NDDDB review generally takes 4 to 6 weeks and may require the applicant to produce additional documentation, such as ecological surveys, which must be completed prior to submitting this permit application. A copy of the NDDDB Determination response letter that has not expired must be submitted with this completed application as Attachment D. Include a copy of any mitigation measures developed for this activity and approved by NDDDB. Be aware that you must renew your NDDDB Determination if it expires before project work commences. If the required NDDDB documents are not submitted as Attachment D, your application will be deemed incomplete and may be subject to denial.

For more information visit the DEEP website at www.ct.gov/deep/nddbrequest or call the NDDDB at 860-424-3011.

3. AQUIFER PROTECTION AREAS: Is the site located within a town required to establish Aquifer Protection Areas, as defined in section 22a-354a through 354bb of the General Statutes (CGS)?

Yes No To view the applicable list of towns and maps visit the DEEP website at www.ct.gov/deep/aquiferprotection

If yes, is the site within an area identified on a Level A or Level B map? Yes No

If your site is on a Level A or Level B map, you are not required to register under the Aquifer Protection Program, however you must follow proper spill control measures to prevent potential contamination of drinking water. If you should have a spill, please call the emergency hotline immediately at 860-424-3338.

4. CONSERVATION OR PRESERVATION RESTRICTION: Is the property subject to a conservation or preservation restriction? Yes No

If Yes, proof of written notice of this application to the holder of such restriction or a letter from the holder of such restriction verifying that this application is in compliance with the terms of the restriction must be submitted as Attachment F.

5. Type of area to be treated: Tidal Waters Pond or Lake Stream

6. Is the waterbody located in a public water supply watershed? (See instructions) Yes No
If Yes, DPH comments may be required as Attachment I to this application.

7. Is the waterbody potentially located 200 ft. or less from a public water supply well? Yes No
(See instructions) If Yes, DPH comments must be submitted as Attachment I to this application.

8. Where does the waterbody flow to (Name of receiving stream or waterbody)? North Flander Brook to Housatonic River

6A1

Is the outflow usually flowing? <input type="checkbox"/> Yes <input checked="" type="checkbox"/> No	Can outflow be stopped? <input checked="" type="checkbox"/> Yes <input type="checkbox"/> No
---	---

Part VI: Site Information (continued)

You can add rows to the tables below, by using "tab" in the last row, in the last column.

9. Identify the size of the waterbody(ies) and the portion of the waterbody(ies) to be treated. Refer to the instructions.

Name of Waterbody	Total Acres	Average Depth ft.	Total Volume Acre ft.	Total Treated Portion ²	
				Acres	Volume Acre-ft
Avian Pond	2.6	4	10.4	2.6	10.4

10. Identify each proposed product to be used, the amount per treatment, the number of treatments and the surface area (acres) or volume (acre feet) of water to be treated with that product. If more than one waterbody will be treated, provide this information for each waterbody.

Name of Waterbody	Full Product Name	Amount per Treatment ¹	Number of Treatments	Treated Portion ²	
				Acres	Volume Acre-ft
Avian Pond	Sonar As	1.4 Quarts	1	2.6	10.4
Avian Pond	Citrine Plus	6 Gallons	4	2.6	10.4
Avian Pond	Aquathol K	13.5 Gallons	1	2.6	10.4
Avian Pond	AquaPro	.2 quarts	1	1	4

¹Provide quantities using only the units specified in the instructions.

²If treating more than 80 acres of a single waterbody or 20 linear miles of shoreline in a calendar year, registration for approval under the General Permit for Point Source Discharges to Waters of the State from the Application of Pesticides is required. (See instructions). Such approval must be submitted as Attachment H to this application if required.

6A1

Part VI: Site Information (continued)

6 A1

11. Does the waterbody have public access? Yes No

12. Is there a state-owned boat launch? Yes No

If yes, will the boat launch be used to access the waterbody? Yes No

If yes, will the boat launch be used for any purpose other than launching a boat? Yes No

If yes, see instructions for submitting an application to the DEEP Land Acquisition and Management Unit for review and approval of state property.

13. Is the waterbody stocked with fish by the state? Yes No

14. Identify use(s) of waterbody:

domestic water supply irrigation watering livestock swimming fishing None

15. Are there any downstream users of the water who may be affected by treatment? Yes No

If yes, please explain:

16. Within 200 ft., inclusive, of the treatment area, are there any **private** drinking water wells 50 ft. or less from the shoreline? Yes No

17. Identify all plants or animals to be controlled: **Filamentous algae, Ameican Pondweed, Curlyleaf Pondweed, Large Leaf Pond Weed Phragmites, Waterlilies .**

18a. Identify all types of fish present: **Bass & Sunfish**

18b. If a copper-based product will be used and there are fish species sensitive to copper, what is the alkalinity of the water to be treated? **No**

19. Projected date(s) of pesticide use: **April - September 2021,2022 : 2 Year Per,ot**

20. List prior years in which chemicals were applied to this waterbody:

2017; to best of my knowledge from a previous firm

Part VII: Supporting Documents

Be sure to read the instructions (DEEP-PEST-INST-200) to determine whether the attachments listed are applicable to your specific activity. Check the applicable box below for each attachment being submitted with this application form. When submitting any supporting documents, please label the documents as indicated in this part (e.g., Attachment A, etc.) and be sure to include the applicant's name as indicated on this application form.

- Attachment A: An 8-1/2" x 11" legible copy or original of a USGS Topographic Quadrangle Map (scale 1:24,000) indicating the exact location of the area to be treated.
- Attachment B: Applicant Compliance Information Form (DEEP-APP-002), if applicable.
- Attachment C: Coastal Consistency Review Form (DEEP-APP-004), if applicable.
- Attachment D: A copy of the NDDDB Determination response letter that has not expired, if applicable. Include a copy of any mitigation measures developed for this activity and approved by NDDDB. Do *not* submit any NDDDB Preliminary Site Assessments with your application. Be aware that you must renew your NDDDB Determination if it expires before project work commences.
- Attachment E: Verification of Notification to Local Inland Wetland Agency:
- 1) copy of a certified mail receipt, or
 - 2) a copy of the application stamped and dated as received by the local inland wetlands agency, or
 - 3) an e-mail from the local inland wetlands agency verifying that this completed application has been sent to such agency.
- For multiple applications submitted to the local inland wetlands agency under one certified mail receipt, please attach a copy of the certified mail receipt to each application.
 - For multiple applications submitted to the local inland wetlands agency under one email, the e-mail from the agency clearly confirming receipt of each application.
- Refer to the instructions.
- Attachment F: Conservation or Preservation Restriction Information, if applicable.
- Attachment G: DEEP Land Management Unit's Authorization letter for treatment of a state-owned or controlled waterbody and/or use of a state-owned boat launch, if applicable.
- Attachment H: Approval under the General Permit for Point Source Discharges to Waters of the State from the Application of Pesticides, if applicable.
- Attachment I: Department of Public Health comments if the proposed treatment area(s) is located 200 ft. or less from a public water supply well or if the waterbody is located within a public water supply watershed and the application proposes the use of flumioxazin or triclopyr, if applicable.

Please note that local inland wetlands agencies may have additional requirements pertaining to the application of aquatic pesticides to waterbodies located under their jurisdiction.

Part VIII: Application Certification

6 A1

The applicant *and* the individual(s) responsible for actually preparing the application must sign this part. An application will be considered insufficient unless *all* required signatures are provided. Please also check the box and provide the date for which you sent one copy of this completed application to the appropriate local inland wetland agency.

"I have personally examined and am familiar with the information submitted in this document and all attachments thereto, and I certify that based on reasonable investigation, including my inquiry of the individuals responsible for obtaining the information, the submitted information is true, accurate and complete to the best of my knowledge and belief.

I understand that a false statement in the submitted information may be punishable as a criminal offense, in accordance with section 22a-6 of the General Statutes, pursuant to section 53a-157b of the General Statutes, and in accordance with any other applicable statute.

I certify that this application is on complete and accurate forms as prescribed by the commissioner without alteration of the text.

I also certify that I have sent one copy of this completed application to the appropriate local inland wetland agency on February 10, 2021 " _____"
Date

Signature of Applicant

February 10, 2021
Date

Mark Roland

Name of Applicant (print or type)

President
Title (if applicable)

Signature of Preparer (if different than above)

Date

Name of Preparer (print or type)

Title (if applicable)

Check here if additional signatures are required. If so, please reproduce this sheet and attach signed copies to this sheet.

Note: Please submit this completed Application Form, Fee, and all Supporting Documents to:

CENTRAL PERMIT PROCESSING UNIT
DEPARTMENT OF ENERGY AND ENVIRONMENTAL PROTECTION
79 ELM STREET
HARTFORD, CT 06106-5127

Please also submit a copy of this completed application to the local inland wetlands agency.

6A1

For
March 22nd
MT8

To: Town Inland Wetland Agencies
From:
Subject: Aquatic Pesticide Permit Applications

Limnology Information and
Freshwater Ecology Inc
19 Sandy Pines Blvd
Hopewell Jct., NY 12533

Enclosed for your information is(are) application(s) for permits to apply aquatic pesticides to waterbodies in your town. Although towns do not have unilateral rejection authority, the Pesticide Management Division (PMD) of the Department of Environmental Protection is interested in receiving comments on the enclosed applications. The PMD is particularly interested to learn of any local conditions not specified on the permit, for example, downstream uses of the water not indicated, or conservation easements on the pond.. Comments should be directed to the Pesticide Management Division, Department of Environmental Protection, 79 Elm Street, Hartford, CT 06106-5127 or by calling (860) 424-3369.

RECEIVED
2/22/21
DMR

RECEIVED
FEB 18 2021

BY:.....*JU*