

Appendix D: Litchfield Hills Greenprint Map – Town of Kent Conservation Resources

LITCHFIELD HILLS GREENPRINT 2011 Map Series, Map 1 Town of Kent Conservation Resources

Legend

- Town Boundary
- Neighbor Town Boundary
- Transportation**
 - US Highway
 - State Highway
 - Local Roads
 - Watercourse
 - Waterbody
 - Marsh
- Permanently Protected Open Space**
 - Easement - Kent Land Trust
 - Fee - Kent Land Trust
 - Other Open Space
- Greenprint Conservation Resources**
 - Agricultural Resources
 - Drinking Water Resource Land
 - Forest Resource Land

TABLE 3.1: Individual Resource Categories

Resource Category	Area of Resource Protected in Town	Total Area of Resource in Town	% of Area Protected in Town
Agricultural	389.14	1,499.02	26.00%
Drinking Water Resource Land	1,401.63	1,689.98	83.29%
Forest Resource Land	7,881.41	11,713.98	67.29%

TABLE 3.2: Total Greenprint Resources in Town

Resource Category	Total Area in Town	% of Area with Greenprint Resources
Permanently Protected Open Space	11,401.13	97.30%
Greenprint Conservation Resources	9,672.18	83.10%

Open Space Acres

Resource Category	Number of Parcels	Number of Acres
Permanently Protected Open Space	24	989.24
Fee - Kent Land Trust	26	787.08
Easement - Kent Land Trust	100	11,027.41
TOTAL OPEN SPACE (Greenprint)	150	12,803.73

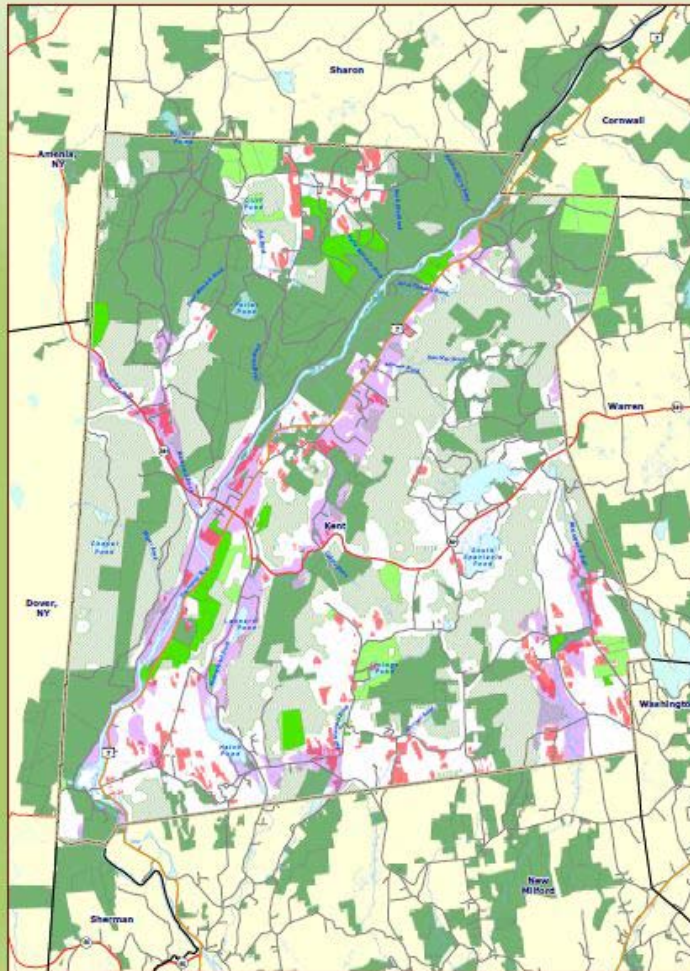
Acres in Town

Resource Category	Total Acres in Town	Percent of Town Permanently Protected
Permanently Protected Open Space	12,803.73	31.80%

Permanently Protected Open Space both land parcels protected by fee-based areas or easement agreements and easement parcels for resource protection are for the benefit of the town and its residents.

Any report regarding the status of individual parcels is subject to verification by the appropriate agency.

All statistics in tables are calculated in ArcGIS using shapefiles created by Greenprint and the CT DEP. These statistics may differ from other sources.



The Litchfield Hills Greenprint Collaborative is a partnership of land trusts and community leaders committed to strengthening local conservation efforts and protecting more land of regional significance across Northwest Connecticut. Members of the Greenprint Collaborative share a conservation vision of protecting 1/3 our remaining prime farmland, open forests and drinking water resources by collectively increasing both the pace and quality of conservation across the Litchfield Hills. By acting together we benefit from a shared pool of talent and resources and can aspire to accomplish more than any single group can do on its own.

Volunteers drawn from members of the Greenprint Collaborative and local conservation leaders serve on a leadership board that oversees its mission, operations and budget. The Housatonic Valley Association provides staff, GIS and administrative support under its 501 (c) (3) charitable designation for the Greenprint as its fiscal sponsor. The Greenprint Collaborative protects land primarily through its member organizations, working in partnerships based on mutual trust and respect, strategic deployment of shared resources and the highest professional standards. Members of the Greenprint pay annual dues to the Housatonic Valley Association and have preferred access to a number of benefits and technical services.

The Greenprint resources are separated into three categories: farming, drinking water resources, and recreational forestland areas. The criteria used to identify each resource are identified below.

AGRICULTURAL RESOURCES
Outstanding Public and Farm-Only areas were created from the INTERSECTION of two data sets of importance to agriculture. The first data set consists of those parcels from the 2007 CTDEP Permanent Field Database prime farmland with adequate improved farmland soils, and nearby improved farmland soils. The second data set contains agricultural land cover (a field digitized from 2007 CTDEP Maps) and white aerial photography.

DRINKING WATER RESOURCES
The Drinking Water Resource Area was created from the combination of two data sets related to the availability of drinking water. The first data set is derived from the 2007 CTDEP Potential Aquifer Thickness Database. The David Malvern Technical Group reports of yielding a sufficient quantity of water for groundwater wells were selected. Further classification was not done, where data high yield or lower yield resources, due to low accuracy in the depth to bedrock data needed to reach the aquifer recharge layer. The second data set is one containing local towns selected from the 2007 CTDEP Waters Database that are important to maintaining high quality surface drinking water sources for public supplies.

FOREST RESOURCES
Large Forest Habitat areas were derived from the 2007 CLM4 (Center for Land Use Education and Research, University of CT) and Open Data sets. Parks with the classification of coniferous forest, deciduous forest, water, non-forested wetland, and forest wetland were selected to create the initial areas. These areas were then buffered inward (inward) 300 feet to account for edge disturbance, and then further reduced by the removal of water and non-forested wetland land cover. The remaining areas greater than 100 acres were then selected to create the Large Forest Habitat.

Map Scale
Scale: 1:40,000
North Arrow



Information on this map is provided for purposes of discussion only; not to be considered an accurate survey.

Litchfield Hills Greenprint Collaborative 2011 Maps Series prepared by Sam Deakin in December, 2011 using best available data.

Map data prepared by Mark Rivers in April 2011 using best available data through their data.

Created in ESRI ArcMap 10.0.0
Map Projection: NAD 83 UTM Zone 18N
Coordinate System: UTM
Copyright (c) 2011
The Litchfield Hills Greenprint Collaborative
P.O. Box 26, 100 East Road
Cornwall Bridge, CT 06034
www.litchfieldgreenprint.org
Phone 860-475-6678
Email: map@litchfield.org