

# TOWN OF KENT, CONNECTICUT

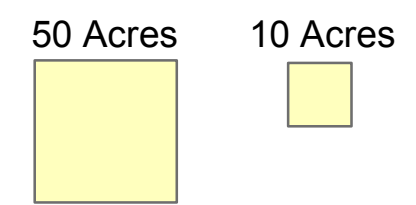
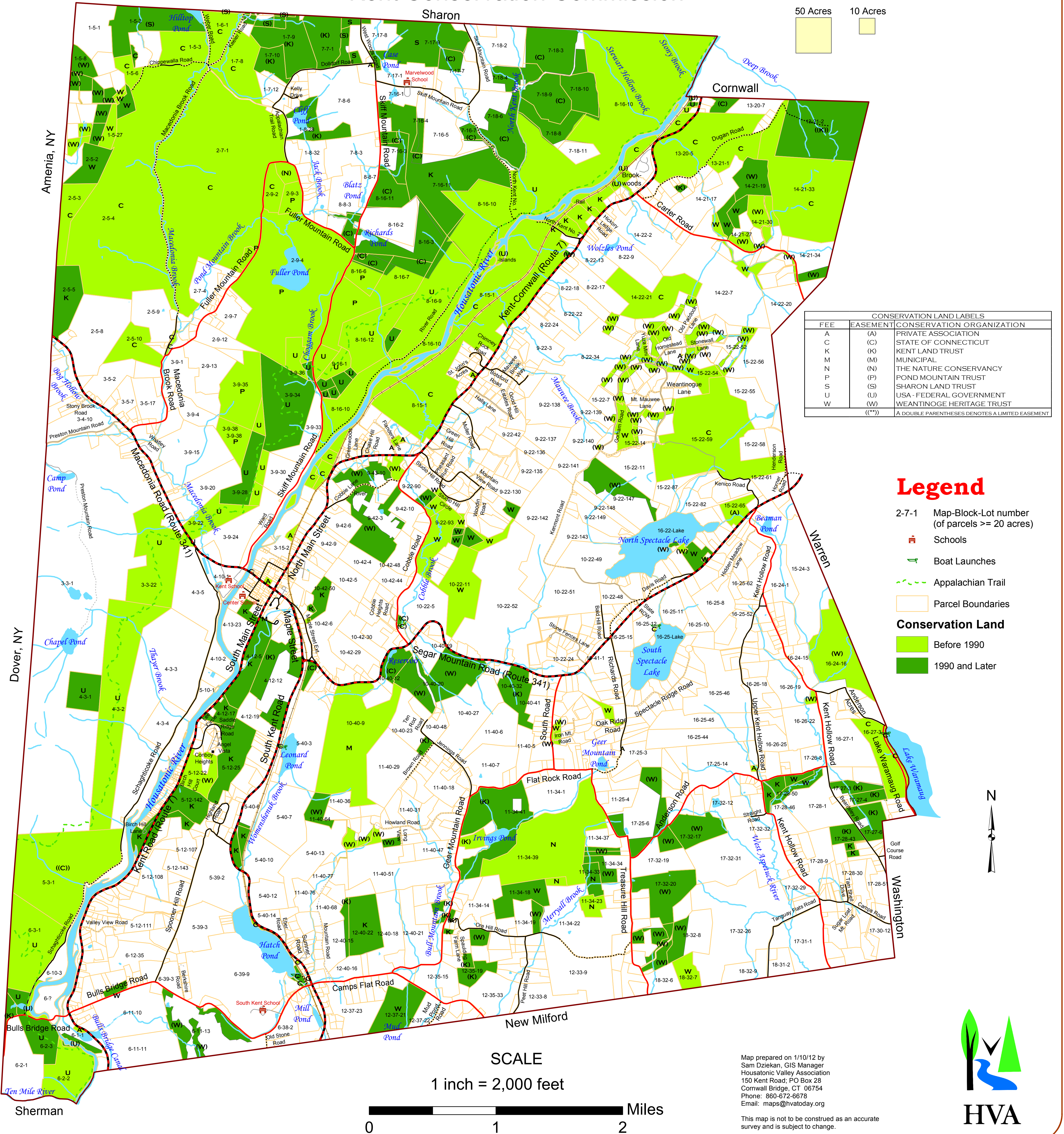
## 13. Permanently Protected Open Space Lands

OCTOBER 2010  
REVISED JANUARY 2012

Town Resources Map Series  
Sponsored by the  
Kent Conservation Commission

DATA SOURCES  
Most data were obtained from the Environmental GIS Data distributed by the Connecticut DEP. Roads are based on USGS DLG files and enhanced through the use of GPS, digital orthophotos, and town review. The Appalachian Trail was obtained through the use of a GPS Receiver.

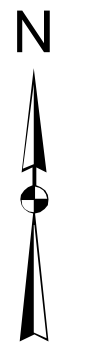
Protected lands were compiled by HVA from the town of Kent's tax assessor's office, with assistance from the Kent Land Trust and the Kent Conservation Commission. Parcel boundaries were digitized from tax assessor's maps with an RMS <= 0.003. This map is updated through December 2009 by the Kent Conservation Commission. Conservation easement lands are privately owned, and not open to the public.



CONSERVATION LAND LABELS		
FEE	EASEMENT	CONSERVATION ORGANIZATION
A	(A)	PRIVATE ASSOCIATION
C	(C)	STATE OF CONNECTICUT
K	(K)	KENT LAND TRUST
M	(M)	MUNICIPAL
N	(N)	THE NATURE CONSERVANCY
P	(P)	POND MOUNTAIN TRUST
S	(S)	SHARON LAND TRUST
U	(U)	USA - FEDERAL GOVERNMENT
W	(W)	WEANTINOGE HERITAGE TRUST
	(**)	A DOUBLE PARENTHESIS DENOTES A LIMITED EASEMENT

### Legend

- 2-7-1 Map-Block-Lot number (of parcels >= 20 acres)
- Schools
- Boat Launches
- Appalachian Trail
- Parcel Boundaries
- Conservation Land**
  - Before 1990
  - 1990 and Later



### SCALE

1 inch = 2,000 feet



Map prepared on 1/10/12 by Sam Dziekan, GIS Manager  
Housatonic Valley Association  
150 Kent Road, PO Box 28  
Cornwall Bridge, CT 06754  
Phone: 860-672-6678  
Email: maps@hvatoday.org

This map is not to be construed as an accurate survey and is subject to change.

